



## **Plan for Maintaining Student and Staff Safety for the 2021-2022 School Year**

Halifax Academy is committed to maintaining a proper balance between the safety of our students and faculty while keeping students on campus for in person instruction to maintain the relationships and experiences our students need to be successful.

### **Principles for a Safe Campus:**

- Protect the health and safety of students and staff.
- Comply with government orders and utilize guidelines issued by the CDC, the Department of Health and Human Services, and the Halifax County Health Department.
- Ensure effective use of sanitation methods, hygiene and hand washing, and physical distancing to the greatest extent possible.
- HA strongly encourages all students and faculty, regardless of vaccination status, to wear a mask whenever physical distancing can not be ensured or is not possible.

## PROGRAM INFORMATION

Halifax Academy plans to resume all scheduled programs, extra curricular, and athletic activities for the 21-22 School year.

### **Before School Program**

Students arriving prior to 7:45 will need to enroll in the BSP and pay the fees associated with the program. Students arriving after 7:45 need to report to the cafeteria at no charge. Students in MS/HS will be released to class at 8:05, and elementary students will be released to class at 8:15.

### **After School Program (PK-1)**

The ASP program will operate from 3:00 - 6:00 daily for students in PK through 1<sup>st</sup> grade in the PK building. Parents must apply for the program and pay the fees associated with this program. We will utilize the punch card system for parents interested as long as space allows each day. Spots can only be guaranteed by enrolling full time or on a regularly scheduled part time basis. Contact Mary Jane Clay in the front office for further details. Safety protocols will be followed as required by the PK program and as determined by the HA PK license.

### **After School Study Hall (2<sup>nd</sup> grade und up)**

The ASSH program will operate in the elementary building from 3 to 6 each day. Parents must apply for the program and pay the fees associated with this program. We will utilize the punch card system for parents interested as long as space allows each day. Spots can only be guaranteed by enrolling full time or on a regularly scheduled part time basis. Contact Mary Jane Clay in the front office for further details. The ASSH program will follow guidelines outlined in this document.

## **Athletics**

Fall athletics will resume with a normal schedule. The NCISAA strongly recommends that all coaches, athletes, spectators, and other participants who are not fully vaccinated wear a face covering indoors unless an exception applies or they are physically distanced more than 6 feet apart at all times.

## **Physical Education, Art, Music**

Safety protocols and physical distancing, as appropriate, will be maintained..

## **Volunteers and Visitors**

In order to minimize risk and maintain a healthy environment for our students and staff, access to campus will be strictly limited to students and staff (including substitute teachers and essential personnel only). We will resume on-campus and in-classroom volunteer opportunities as soon as it is deemed safe to do so.

## **Lunch and Break**

The cafeteria will be open to all students in grades 2-12, with designated seating assigned by grade level. Pre-K, K, and 1<sup>st</sup> grade students will have lunch and break delivered to their classrooms. Lunch order forms will be available again this year as needed. Our HA Café staff is working hard to provide tasty, nutritious options.

## **HEALTH AND SAFETY**

We will need your support to maintain a healthy campus and reinforce our health and safety standards. You can help your children prepare by incorporating the following into your daily routine:

- Frequent hand washing
- Use of hand sanitizer. Coughing and sneezing into elbows
- Daily temperature checks
- Physical activity and time outside
- Teaching and practicing physical distancing (6' apart)
- Wearing a cloth face covering for shorter and then longer periods of time if you choose to have your child masked throughout the school day.

\*Face coverings should not be worn on children under the age of two or anyone who has trouble breathing. \*Students and employees who travel internationally or to a destination under a CDC Level 3 or higher Travel Health Notice are required to notify the school and self-quarantine for 10 days (10 school days) upon return.

## **The HA Health and Safety Agreement**

All families must commit to supporting HA's health and safety standards. This includes daily temperature checks and keeping children at home when they have COVID-like symptoms or have potentially been exposed. All families must sign and return the HA COVID Waiver as well as the Agreement prior to the start of school on August 24, 2021.

## **Requirements for Face Coverings for School and School Sponsored Events**

The CDC, NCDHHS, and the Halifax County Health Department view the use of face coverings as an important way to slow/stop the spread of COVID-19. HA strongly encourages all students and faculty, regardless of vaccination status, to wear a mask whenever physical distancing can not be ensured or is not possible.

Students and faculty members who choose to wear masks must bring a face mask every day. HA's face mask policy is subject to change in the case of a government mandate or if warranted by special circumstances.

## **Don't Forget to Keep Your Children Emotionally Safe:**

Studies have shown that there has been an increase in anxiety and depression among all age groups during the pandemic. If you have concerns about your child's needs feel free to contact Kristie Harris, School Counselor, to discuss the need for additional support.

## Halifax Academy Health Agreement

I Agree to:

### 1. Monitor My Child's Health:

- I will not send my child to school if he/she is unwell or exhibits any COVID-like symptoms.
- I will not send my child to school if he/she has a fever of 100 degrees or higher.

### 2. Follow Public Health Directives:

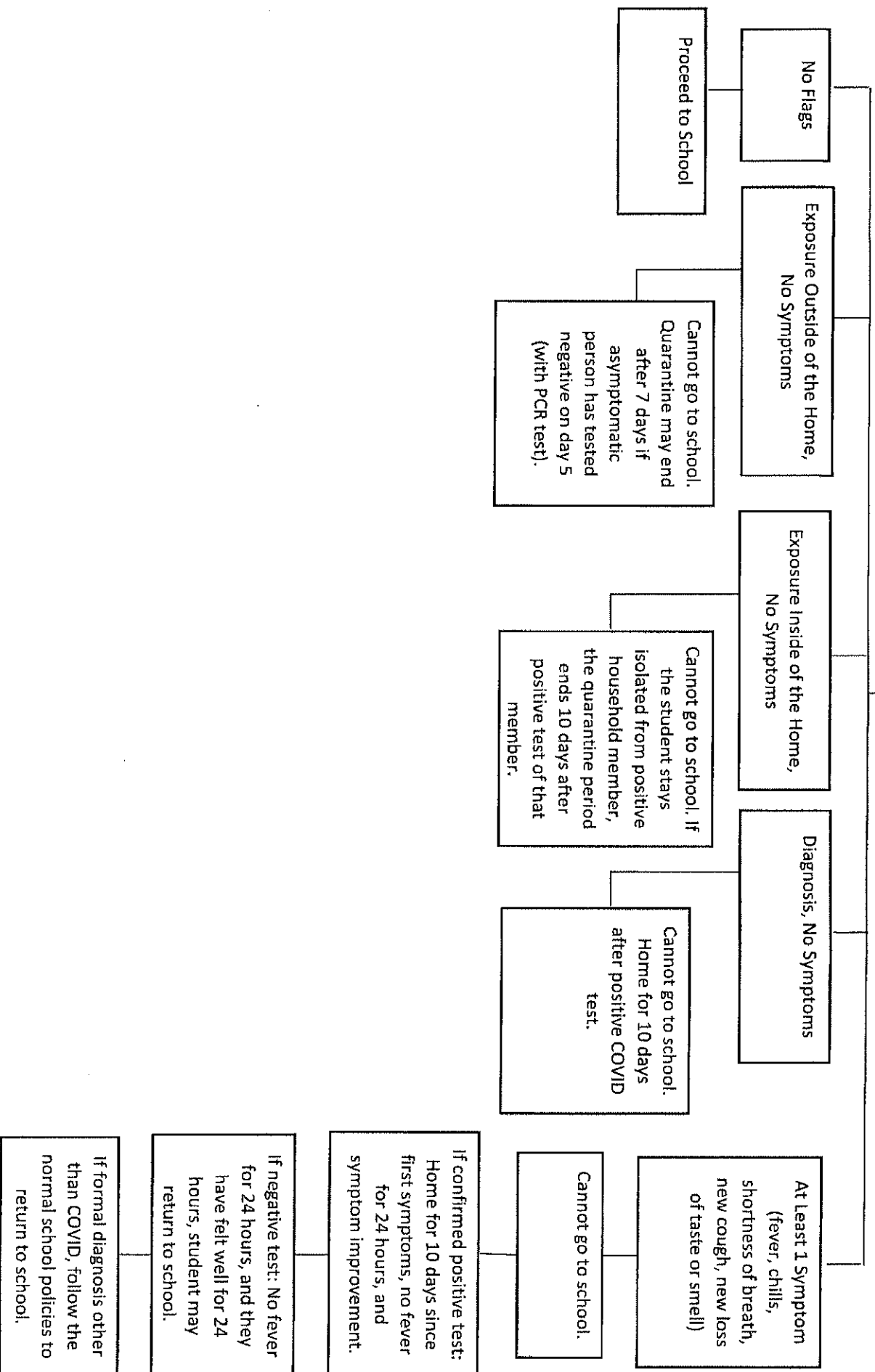
- Parents and students who travel internationally or to a destination under a CDC Level 3 or higher Travel Health Notice are required to notify the school and self-quarantine for 10 days upon return.

### 3. Communication:

- I will notify the school if a member of my household has been exposed to someone with a confirmed case of COVID-19.
- I will monitor school communication via email and access current notifications at [www.halifaxacademy.org](http://www.halifaxacademy.org).

\*Exposure refers to being in contact (within 6 feet of someone for a cumulative total of 15 minutes or more over a 24-hour period) with someone who has COVID-19. \*According to the CDC, individuals who are fully vaccinated do NOT need to quarantine after contact with someone who had COVID-19 unless they have symptoms.

# Deciding When to Stay Home



## **VIRTUAL LEARNING POLICY**

Halifax Academy seeks to prepare students to face the challenges, opportunities, and responsibilities they will encounter in life and college while instilling Christian values and work ethic. This objective can best be met in an in-person learning environment. While the use of technology plays a significant role in our in-person instructional program, on its own, it is not considered an adequate replacement for the Halifax Academy experience. Therefore, Halifax Academy does not offer a virtual/remote learning option as an alternative to in-person learning for its students.

## **REMOTE LEARNING**

Even with the planning and protocols we have in place, there may be circumstances beyond our control in the coming year. In the event that a school closure is mandated by government officials OR conditions in our area warrant a school closure, we will operate remotely for as long as we have to.

During any period of temporary interruption and/or school mandated quarantine, we will remain dedicated to delivering our commitment to students and parents by providing a quality online learning experience that includes teacher face time, live streamed and recorded lessons, and virtual events to keep our community connected. This will allow for flexibility for all of our students.

During a building closure, we will do everything in our power to offer childcare for lower school students if allowed by local health officials.